

LEGEND
D.E. - Dedicatory Easements
P.U.E. - Public Utility Easements
S.U.E. - Subjunctive Easements
U.E. - Utility Easement

TABLE OF LOT SIZES

LOT LABEL	AREA (S.F.)	ACRES
30	34,800	0.792
31	34,800	0.792
32	31,030	0.708
33	31,030	0.708
34	45,388	1.042
35	45,388	1.042
36	31,030	0.708
37	31,030	0.708
38	60,537	1.389
39	60,537	1.389
TOTAL	11,760	

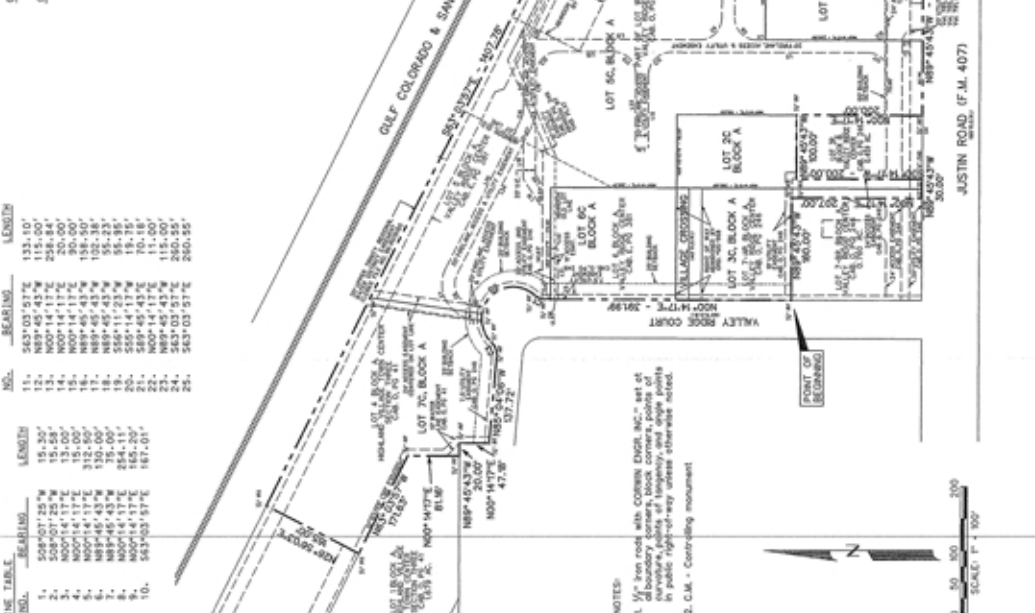
LOTS 10-70, BLOCK A
VALLEY RIDGE CENTER
IS A REDEVELOPMENT OF
VALLEY RIDGE CENTER
LOTS 5 & 6, BLOCK A
CBL 0, PG 381
VALLEY RIDGE CENTER
LOT 7-9, BLOCK A
LOT 10, BLOCK A
CBL 0, PG 246
HIGHLAND VILLAGE
TOWN CENTER
LOT 4, BLOCK A
CBL 0, PG 41
OUT OF THE E.T. CLARY SURVEY
TRACT NO. 248 AGE,
BENTON COUNTY, TEXAS
FORBOSTER OVERSHOOT, LTD.
3038 Austin Road, Suite 200
Lewisville, TX 75077
PREPARED BY
COURTNEY HARRIS, INC.
200 W. BELLMIK, SUITE C
ALLEN, TEXAS 75013
(972) 399-7200
AUG 2000 SCALE 1"=100'

Filed for Record in
Benton County
on July 25, 2000 at 01:49 P
Book #
Page #
Record Number - 20908
Sheet # 38.00
Price \$225.00

SHEET 1 OF 2

CURVE TABLE

CURVE NO.	BEARING	LENGTH	RADIUS	CHORD	BEARINGS
1.	179°24'34"	75.00'	50.00'	17.58'	N81°11'34.72"
2.	55°12'09"	22.00'	22.00'	22.78'	N68°48'49.97"
3.	29°50'10"	25.00'	25.00'	25.92'	N75°58'31.76"
4.	108°48'38"	35.00'	35.00'	66.47'	N82°31'44.72"
5.	108°48'38"	35.00'	35.00'	66.47'	N82°31'44.72"
6.	90°00'00"	35.00'	35.00'	35.00'	N81°45'43.72"
7.	90°00'00"	35.00'	35.00'	35.00'	N81°45'43.72"
8.	90°00'00"	35.00'	35.00'	35.00'	N81°45'43.72"
9.	90°00'00"	35.00'	35.00'	35.00'	N81°45'43.72"
10.	90°00'00"	35.00'	35.00'	35.00'	N81°45'43.72"
11.	90°00'00"	35.00'	35.00'	35.00'	N81°45'43.72"
12.	90°00'00"	35.00'	35.00'	35.00'	N81°45'43.72"
13.	90°00'00"	35.00'	35.00'	35.00'	N81°45'43.72"
14.	28°41'46"	35.00'	35.00'	65.52'	N19°24'56.28"
15.	28°41'46"	35.00'	35.00'	65.52'	N19°24'56.28"
16.	60°38'09"	35.00'	35.00'	37.04'	N20°33'21.72"
17.	60°38'09"	35.00'	35.00'	37.04'	N20°33'21.72"
18.	111°54'19"	35.00'	35.00'	71.28'	N05°02'04.96"



Cab W pg 38U

NOTES:
1. 1/4" from rock with CURBIN ENGR. INC., set of boundary corners, block corners, points of sale in public right-of-way unless otherwise noted.
2. C.M. - Controlling monument



JUSTIN ROAD (F.M. 407)