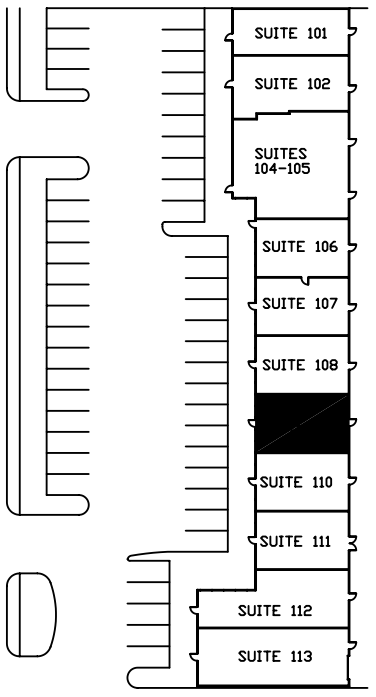
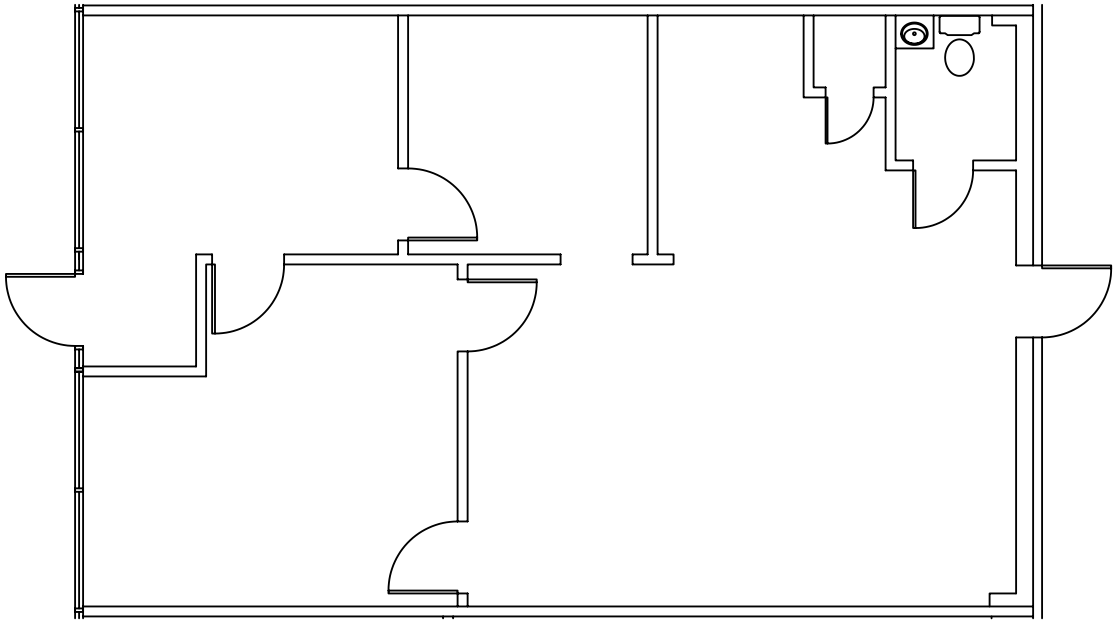


TRINITY PLAZA

**817 South Mill Street
Lewisville, Texas 75057**



SOUTH MILL STREET



SITE PLAN

Suite 109 - 995 SQ. FT.

SCALE = 1/8" = 1'-0"

FIRST COMMERCIAL REALTY, LLC

2016 Justin Road, Suite 300

Lewisville, Texas 75077

www.firstcommercialrealty.com

972-966-1111